

# CREATIVE SPACE

Now Available for Lease in Historic Georgetown



## THE BOTTLING PLANT IN THE ORIGINAL RAINIER BREWERY

Perfect for artists, crafts people and light manufacturing businesses. Space sizes are flexible and can accommodate tenancies from 661 sq ft. to 2,956 sq ft. Many spaces have beautiful natural light, brick walls and hard wood floors.

The 18,000 square foot, 19-foot clear height warehouse - the former bottling and cooperage facility of the historic brewing operation - could be completed to the tenant's specifications. Be part of the up-and-coming Georgetown district!

Annual Rent: \$12 - \$14 sq ft /+ Expenses

Storage Rent: \$6.00 /sq ft Flat fee

**A SEATTLE MAGAZINE BEST NEIGHBORHOOD**

## SABEY

Mikel Hansen mikelh@sabey.com | Debbie Sabey debbies@sabey.com | 206.281.8700  
12201 Tukwila International Blvd. Fourth Floor Seattle, Washington 98168 | SABEY.COM

## SPACE FEATURES

- Lots of natural light
- Exposed brick
- Open floor plan
- Historic detailing
- Ideal for craft studio or light industrial

## LOCATION FEATURES

- Generous parking
- Easy access to I-5 and Highways 99 & 509
- Walk to restaurants and specialty shops
- Dynamic arts/crafts community and more...



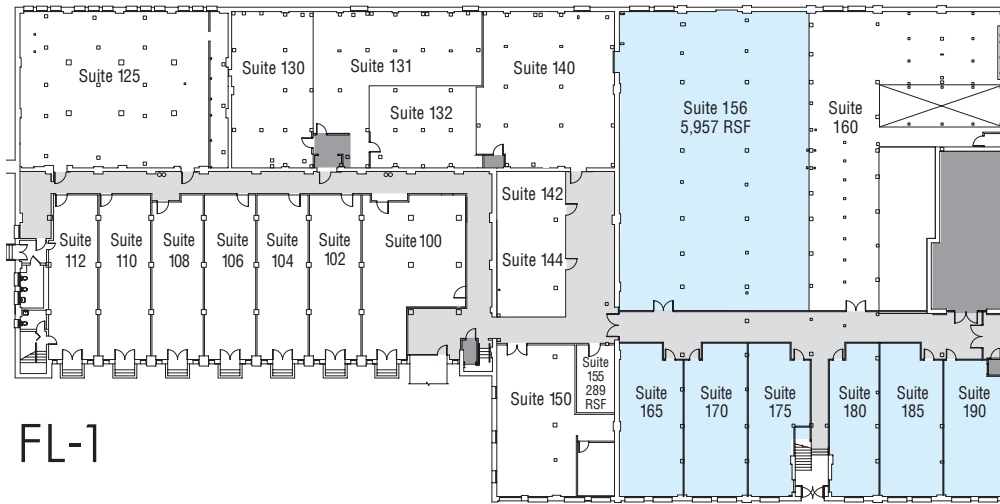
**Scan for more information.**  
To view on your mobile device,  
download a QR reader app  
through your device's app store.

# CREATIVE SPACE

Design your space in Historic Georgetown

**BOTTLING PLANT**  
5624-5790 Airport Way South  
Seattle, Washington

- Available
- Leasing Office



FL-1

## First Floor

### Suite 156 (Storage)

Square Footage: 5,957 rsf

### Future Space Available

#### Suite 165

Square Footage: 1,011 rsf

#### Suite 170

Square Footage: 977 rsf

#### Suite 175

Square Footage: 821 rsf

#### Suite 180

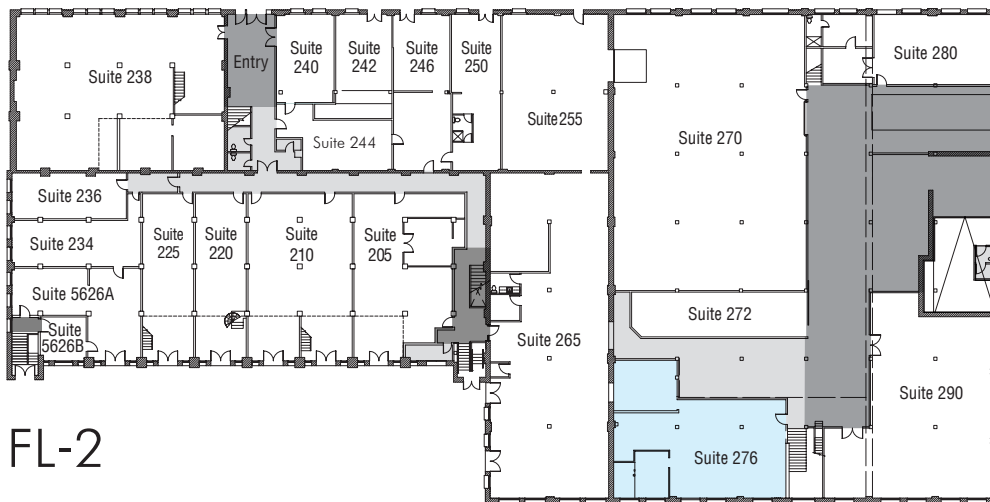
Square Footage: 749 rsf

#### Suite 185

Square Footage: 965 rsf

#### Suite 190

Square Footage: 814 rsf

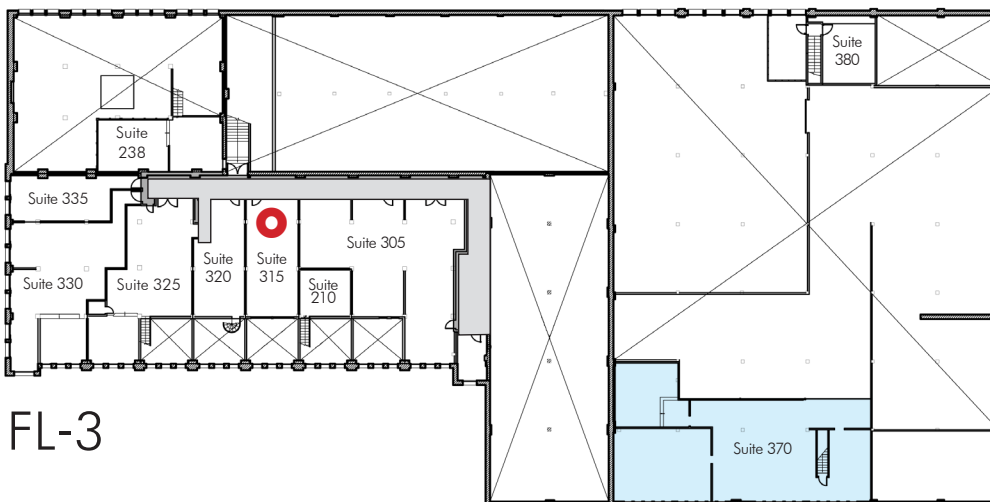


FL-2

## Second Floor

### Suite 276

Square Footage: 2,011rsf



FL-3

## Third Floor

### Suite 370

Square Footage: 2,956 rsf



Mikel Hansen mikelh@sabey.com | Debbie Sabey debbies@sabey.com | 206.281.8700

12201 Tukwila International Blvd. Fourth Floor Seattle, Washington 98168 | SABEY.COM