

CREATIVE SPACE

Now Available for Lease in Historic Georgetown



SPACE FEATURES

- Exposed brick
- Open floor plan
- Historic detailing
- Multi-purpose space
- Varying ceiling heights

LOCATION FEATURES

- Parking
- Easy access to I-5 and Highways 99 & 509
- Walk to restaurants and boutique retail shops
- Dynamic arts/crafts community and more...

THE MALT HOUSE IN THE ORIGINAL RAINIER BREWERY

Spacious areas for creative enterprises including light manufacturers, food and beverage production and artists. Some spaces suitable for storage and warehousing. Size of spaces makes them versatile as well as utilitarian. Brick walls, plenty of light. Located just off Airport Way South. This circa 1914 building has ample on and off street parking. Be part of the unique Georgetown District!

A SEATTLE MAGAZINE BEST NEIGHBORHOOD



SABEY

Mikel Hansen mikelh@sabey.com | Debbie Sabey debbies@sabey.com | 206.281.8700
12201 Tukwila International Blvd. Fourth Floor Seattle, Washington 98168 | SABEY.COM

Scan for more information.

To view on your mobile device, download a QR reader app through your device's app store.

CREATIVE SPACE

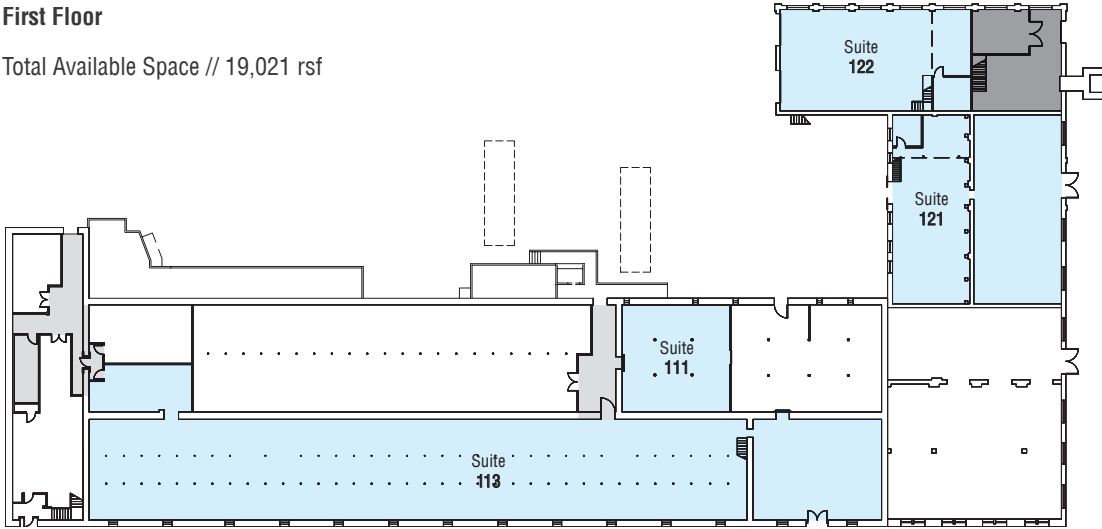
Design your space in Historic Georgetown

MALT HOUSE

5800-5890 Airport Way South
Seattle, Washington

First Floor

Total Available Space // 19,021 rsf



- Floor Common
- Building Common
- Leased
- Available

Suite 111
Square Footage: 1,442 rsf

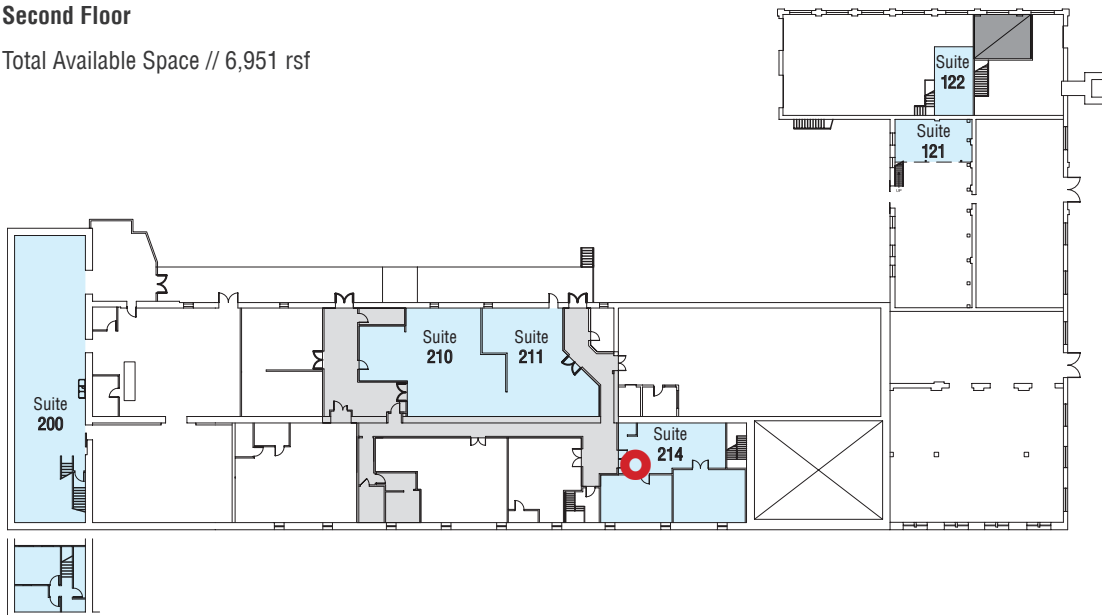
Suite 113
Square Footage: 10,607 rsf

Suite 121
Square Footage: 4,295 rsf

Suite 122
Square Footage: 2,677 rsf

Second Floor

Total Available Space // 6,951 rsf



- Floor Common
- Building Common
- Leased
- Available

Suite 200
Square Footage: 3,111 rsf

Suite 210
Square Footage: 1,179 rsf

Suite 211
Square Footage: 1,092 rsf

Suite 214
Square Footage: 1,569 rsf

● Leasing Office

SABEY

Mikel Hansen mikelh@sabey.com | Debbie Sabey debbies@sabey.com | 206.281.8700
12201 Tukwila International Blvd. Fourth Floor Seattle, Washington 98168 | SABEY.COM

